

The chemical composition of Amazonian plants (*)

A catalogue, edited by Setor de Fitoquímica, INPA, Manaus, Amazonas

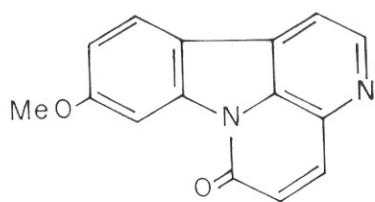
FAMILY	SPECIE
SIMAROUBACEAE	<i>Simaba cuspidata</i> Spruce ex Engl.

OCCURRENCE: Rio Negro, Amazonas

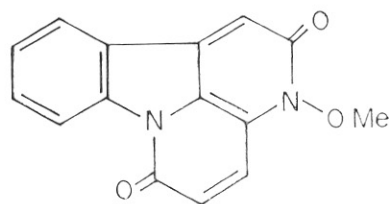
TRUNK WOOD:

8-Methoxycanthin-6-one (1)

3-Methoxycanthin-2,6-dione (2)



(1)



(2)

REFERENCE:

A.M. Giesbrecht, H.E. Gottlieb, M.O.F. Goulart, R.A. de Lima and A. E. G. Sant'ana.
Phytochemistry 19(2):313. 1980.

(*) — Contributions to this catalogue, which will be continued in subsequent issues of this Journal, are invited, and should be submitted to address above.

FAMILY

LEGUMINOSAE

SPECIE

Swartzia laevicarpa Amsh.

OCCURRENCE: Manaus, Amazonas

TRUNK WOOD:

Sitosterol

Stigmasterol

8-hydroxy-5-methyl-3,4-dihydroxyisocoumarin

(6aR,11aR)-2,8-Dihydroxy-3,9-dimethoxypterocarpan

(6aR,11aR)-2,8-Dihydroxy-3,9,10-trimethoxypterocarpan

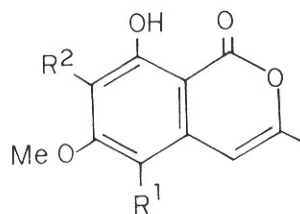
(6aR,11aR)-8-Hydroxy-3,4,9,10-tetramethoxypterocarpan

(6aR,11aR)-2,8-Dihydroxy-3,4,9,10-tetramethoxypterocarpan

5-Chloro-8-hydroxy-6-methoxy-3-methylisocoumarin (1a)

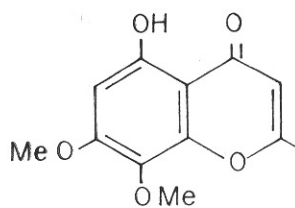
7-Chloro-8-hydroxy-6-methoxy-3-methylisocoumarin (1b)

5-Hydroxy-7,8-dimethoxy-2-methylchromone (2)



1a $R^1 = Cl, R^2 = H$

1b $R^1 = H, R^2 = Cl$



2

REFERENCE:

Raimundo Braz Filho, Miguel P.L. de Moraes and Otto R. Gottlieb.
Phytochemistry 19(9):2003. 1980.